



**GRAYSTONE CERAMIC LLP.**

Survey No. 86, Plot No. 14, Sartanpar Road,  
8-A, National Highway, Ta. Wankaner, Dist. Morbi,  
Pin. 363 621, Gujarat, **INDIA.**

Mo.: +91 7229 07 07 07

E-mail: [info@graystoneceramic.com](mailto:info@graystoneceramic.com)



[www.graystoneceramic.com](http://www.graystoneceramic.com)



600x600mm

DIGITAL GLAZED TILES

FURNISH YOUR DREAMS

**WOODEN**  
COLLECTION



Welcome to  
**Graystone Ceramic**

We are very pleased to interact with you and will introduce ourselves as a manufacturer of digital glazed tiles by our brand "GRAYSTONE CERAMIC LLP", and proudly providing the finest quality of digital glazed tiles to our valued customers.

We are manufacturing and supply high quality finest range of digital glazed tiles in size 600x600mm & 600x1200mm.

Graystone Ceramic have set up a world class production facility to manufacture high quality digital glazed tiles. The designs, size, colors and surface finishes will be made keeping in mind the needs of consumer.

**OUR VISION**

We always aim to continue to understand the market's demands, maintain a high level of creativity and exceeding our customer's expectations with cutting-edge ideas, designs and products.

**OUR MISSION**

Our expansion plans involve a formula of adopting state of the art technologies, upgrading our design capabilities, developing staff and a high market intellinence that sets customer's needs.

**EMBELLISH  
YOUR  
DESIRE**



## ABOUT GRAYSTONE

We are manufacturing and supply high quality finest range of digital glazed tiles in size 600x600mm & 600x1200mm. Trust, quality and reliability have been the watchwords of Graystone Ceramic and they plan to continue fulfilling the expectations of their vast array of customers.

Total customer satisfaction via abortion of quality management systems in all spheres of activity guarantee adherence to predecided standards. The company natures each relationship be it with the trade, consumers.

This has established Graystone Ceramic as a reliable and trustworthy entity capable of overcoming market challenges. Just like their historical counterparts, Graystone Ceramic will be around to witness future market developments and participate in remaking the personality of the humble ceramic tile.

Graystone Ceramic is collection of wood effect floor coverings, all beautifully replicated to give the appearance of natural textures to enhance your home's interior.



# FURNISH YOUR DREAMS

**WOOD**

600x600mm  
DIGITAL GLAZED TILES

WALL & FLOOR

#### LONG LIFESPAN

If properly installed and maintained, digital glazed tiles has the ability to last for decades of recommended use.

#### AESTHETICALLY PLEASING

We have different colors, shapes, and styles of flooring to help match the aesthetic appeal of our customers.

#### HYGIENE

The surface of ceramic and digital glazed tiles does not easily retain antigens or allergens, nor do they absorb fumes, odors or smoke.

#### LESS STAINING

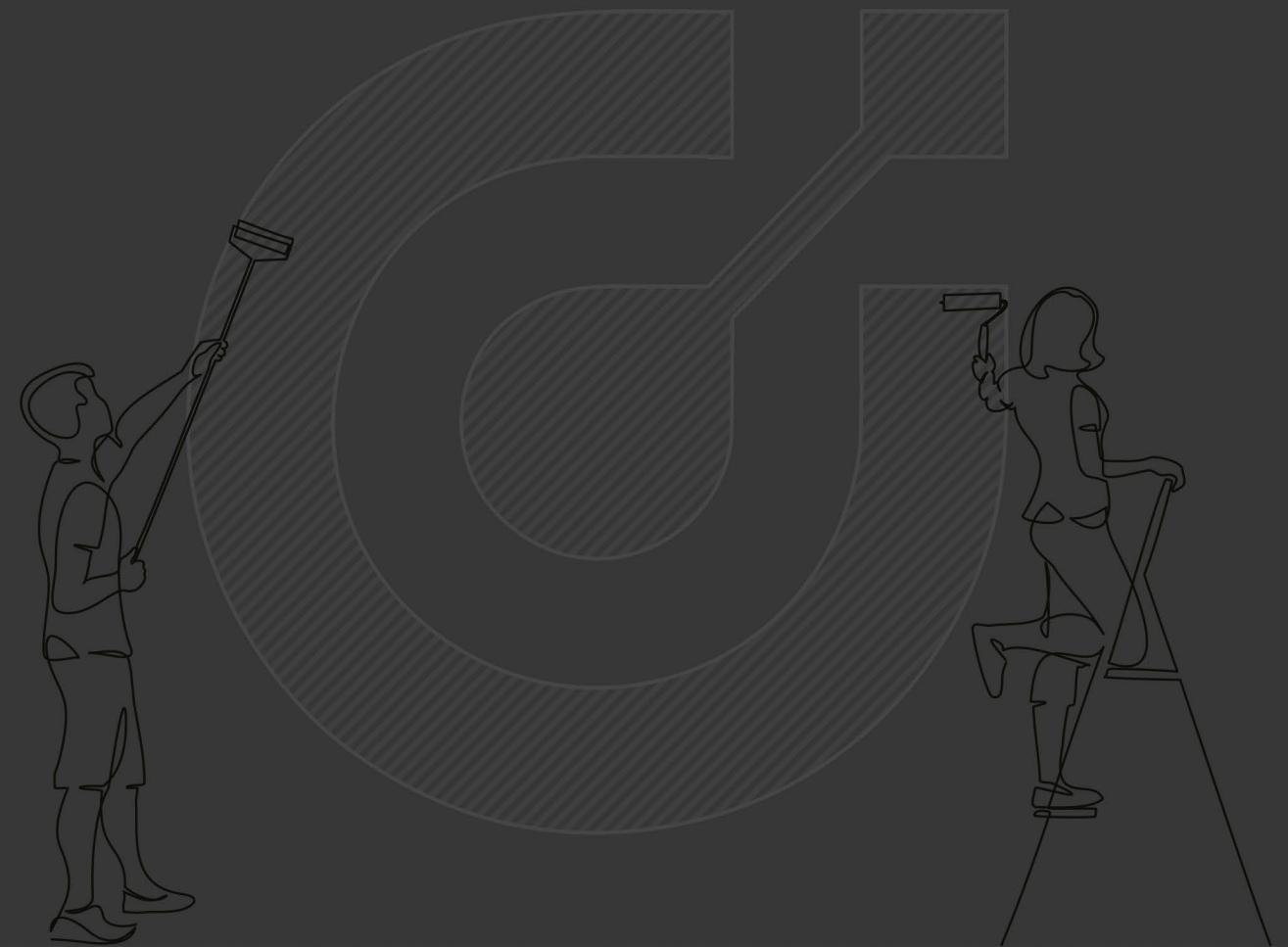
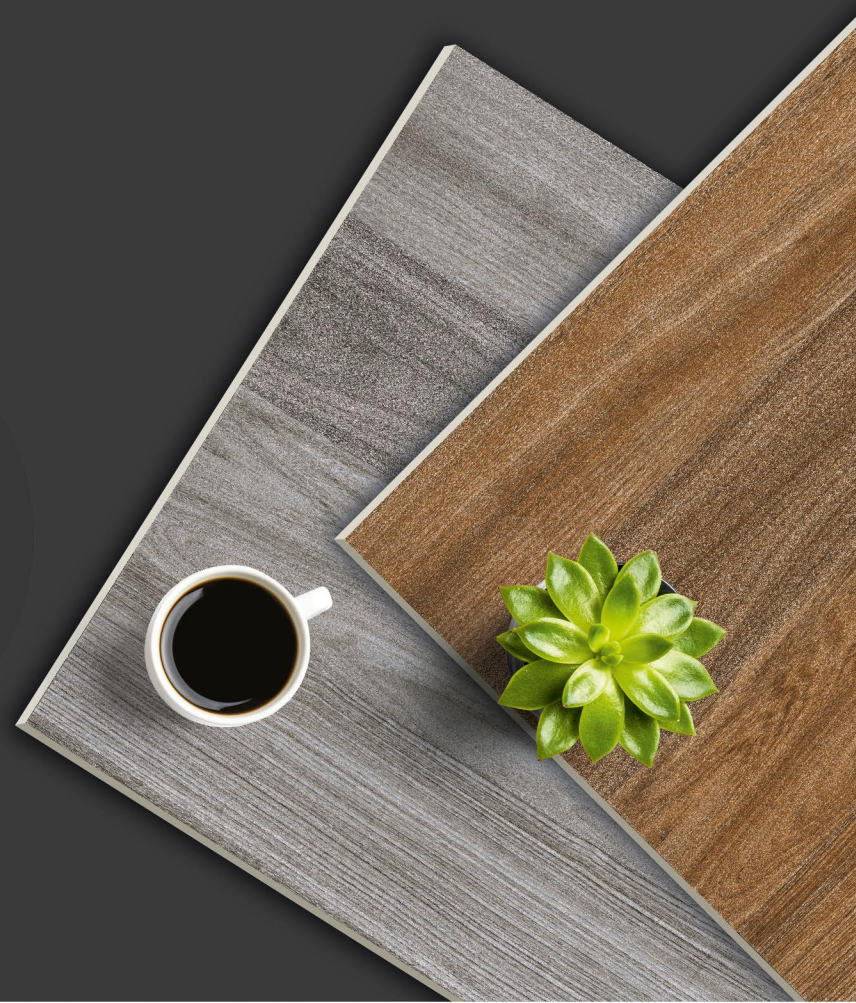
Digital glazed tiles is less absorbent, therefore you won't experience any staining in the event of spilled drinks, food, or chemicals.



**600x600mm**  
**DIGITAL GLAZED TILES**

Wooden Collection

**UNIVERSALLY  
BEAUTIFUL  
ART**



#### VARIETY OF DESIGNS

Our digital glazed tiles come in a variety of styles and designs. digital glazed tiles can mimic natural stone such as limestone and granite, or other natural materials such as wood.



#### HARD WEARING

Because our digital glazed tiles are much harder that is why our digital glazed tiles are ideal choice for use on floors, being able to withstand the wear and tear that comes with them.



#### LOW WATER ABSORPTION

Our digital glazed tiles are low water absorption makes that is why it is the perfect choice for bathrooms, kitchens, wetrooms and even swimming pools!

Furnish your dreams  
**GRAYSTONE**  
CERAMIC

WE EXPORT DIGITAL GLAZED TILES  
**WORLD WIDE**



FURNISH  
YOUR  
DREAMS

600x600mm  
DIGITAL GLAZED TILES

400+  
DEALERS

800+  
PRODUCT RANGE

17+  
EXPORT COUNTRY

Membership & Affiliations





600x600mm  
DIGITAL GLAZED TILES

SURFACES AND BENEFITS



Suitable for contact  
with foodstuffs



Resistant to chemicals,  
acids, alkalis and solvents



Resistant to  
humidity



Resistant to mould  
and fungi



Resistant to  
staining



Resistant to UV rays,  
no alteration to colours



Suitable for indoor and  
outdoor applications



Resistant to  
thermal shock



Resistant to  
deflection



Resistant to heat and  
high temperatures



Resistant to  
freeze-thaw



Resistant to scratches  
and abrasions

# Canadian Culture



## WOODEN Series

Wooden finish tiles are available in an exciting range of colours patterns, shades, textures and other defining features of wood. Wooden finish tiles offer a unique solution for surface styling of area.



WOODEN



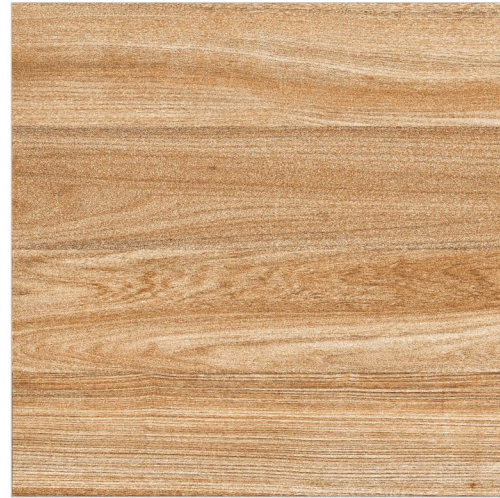
DIGITAL GLAZED TILES  
WALL 60X60CM, 600X600MM | FLOOR 60X60CM, 600X600MM



DIGITAL GLAZED TILES



ECO BROWN



ECO LIGHT TAN

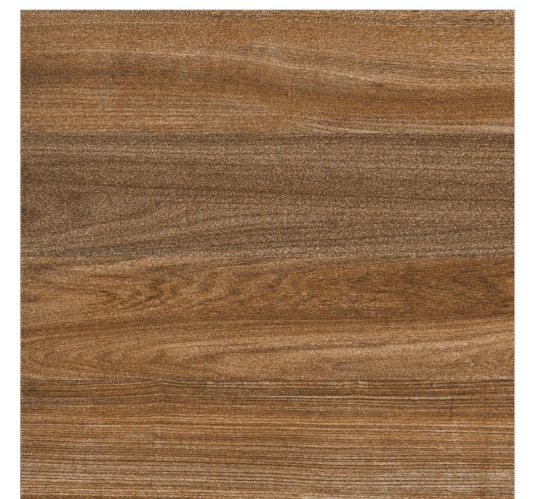


PAGE / 01

600X600MM



ECO GREY



ECO WENGE

# WOODEN



**DIGITAL GLAZED TILES**  
WALL 60X60CM, 600X600MM | FLOOR 60X60CM, 600X600MM



DIGITAL GLAZED TILES



CLIMBER WOOD



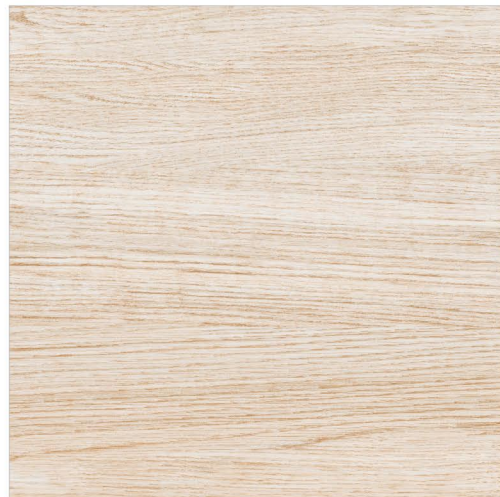
ELITE WOOD



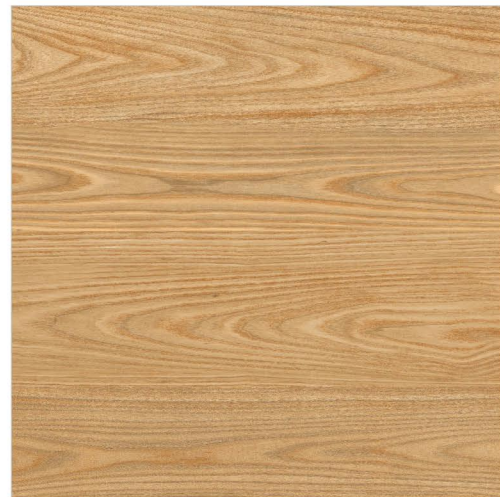
ERAWOOD BEIGE



HAMTON WOOD



MAPPLE WOOD



TIMBER LIGHT

PAGE / 03

600X600MM



■ **DIGITAL GLAZED TILES**  
WALL 60X60CM, 600X600MM | FLOOR 60X60CM, 600X600MM



WOODEN



FONTANA WOOD BEIGE



FONTANA WOOD GREY



NATURE GREY



NATURE LIGHT

# WOODEN



**DIGITAL GLAZED TILES**  
WALL 60X60CM, 600X600MM | FLOOR 60X60CM, 600X600MM



DIGITAL GLAZED TILES



PINE DARK



PINE LIGHT



PAGE / 07

600X600MM



ROME WOOD



SIGMA WOOD

WOODEN



DIGITAL GLAZED TILES  
WALL 60X60CM, 600X600MM | FLOOR 60X60CM, 600X600MM



DIGITAL GLAZED TILES



VOLCANO WOOD



COSTA RICA WOOD



PAGE / 09

600X600MM



WOODEN



DIGITAL GLAZED TILES  
WALL 60X60CM, 600X600MM | FLOOR 60X60CM, 600X600MM



DIGITAL GLAZED TILES



EDEN ASH



EDEN BRONZE

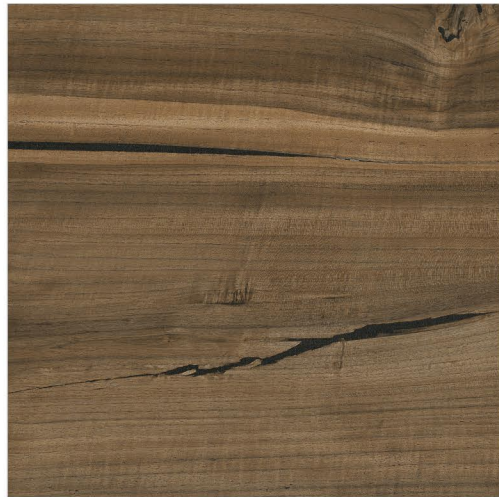


ARTWOOD

PAGE / 11

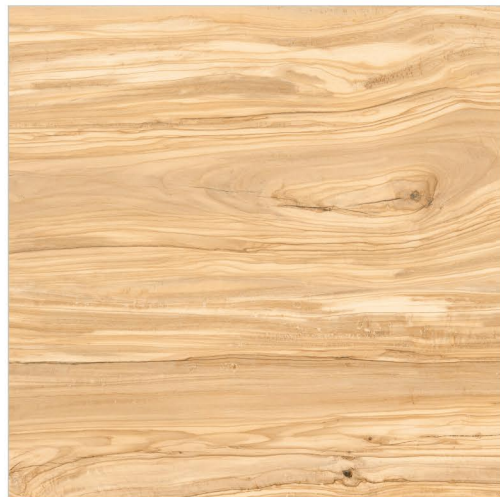


PRISTINE LIGERA



PRISTINE WENGE

600X600MM



TONGASS MARRONE



TONGASS OAK



SPECIFICATIONS

Work Size		Avg. Weight Per Box. (Kgs.)	No. of Tiles Per Box	Coverage Areas Per Box
Dimensions (In mm)	Thickness (in mm)			
600x600 (Digital)	9.25	28.50	4 Pcs.	1.44 Sq. meter (15.5 Sq. Foot)

Conformity of <b>Graystone Ceramic</b> to Indian Standards (Group B II a) IS:15622:2017				
Sr. No.	CHARACTERISTICS	IS: 15622:2017	Our Specification	Method of Testing
1	Deviation in Length & Width	Max. ± 0.1 %	Max. ± 0.1 %	IS : 13630-1
2	Deviation in Thickness	Max. ± 5.0 %	Max. ± 3.0 %	IS : 13630-1
3	Deviation in Straightness of sides	Max. ± 0.1 %	Max. ± 0.03 %	IS : 13630-1
4	Deviation in Rectangularity	Max. ± 0.1 %	Max. ± 0.04 %	IS : 13630-1
5	Surface Flatness	Max. ± 0.5 %	Max. ± 0.04 %	IS : 13630-1
6	Surface Quality	Min. 95% free from visible defects.	Min. 99% free from visible defects.	IS : 13630-1
7	Water Absorption	Avg. $3 < E \leq 6\%$ Individual max. 6.2 %	Avg. $2 < E \leq 6\%$ Individual max. 6.0 %	IS : 13630-2
8	Scratch Hardness (Moh's Scale)	Min. 4	Min. 5	IS : 13630-13
9	Abrasion Resistance	Class II Min.	Class III Min.	IS : 13630- 11
10	Crazing Resistance	4 Cycle at 7.5 bar min	4 Cycle at 7.5 bar Min.	IS : 13630- 11
11	Modulus of Rupture N/mm <sup>2</sup>	Avg. 22, Individual 20, Min	Avg. 36 , Individual 35 Min.	IS : 13630 - 6
12	Breaking Strength, in N	600. Min. for thickness < 7.5mm 1000, Min. for thickness ≥ 7.5 mm	1670 Min.	IS : 13630- 6
13	Chemical Resistance	Required if agreed	Resistance to all acids and alkalis (except hydrochloric acid, Citric acid & Resistance to Alkali Potassium Hydroxide)	IS : 13630- 8
14	Thermal Shock Resistance	10 Cycles, Min.	10 Cycles Min.	IS : 13630- 5
15	Resistance to Household Chemicals	Class AA, Min.	Class AA Min.	IS : 13630- 8
16	Resistance to staining	Class 1, Min.	Class 1 Min.	IS : 13630- 8

Note

\*All technical features stated in leaflets, In master brochure are meant to be an indication of anaverage of figures recorded within a span(determined by international) in several production runs,therefore a slight discrepancy in quality figures of a certain batch in relation to these figures cannot be considered a production failure.

APPLICATION

