

Furnish your dreams  
**GRAYSTONE**  
CERAMIC

**stone** X  
SERIES

**PRECIOUS STONEART  
COMPOSITIONS**

**600x600mm**

**DIGITAL GLAZED TILES**





Welcome to  
**Graystone Ceramic**

We are very pleased to interact with you and will introduce ourselves as a manufacturer of digital glazed tiles by our brand "GRAYSTONE CERAMIC LLP", and proudly providing the finest quality of digital glazed tiles to our valued customers.

We are manufacturing and supply high quality finest range of digital glazed tiles in size 600x600mm & 600x1200mm.

Graystone Ceramic have set up a world class production facility to manufacture high quality digital glazed tiles. The designs, size, colors and surface finishes will be made keeping in mind the needs of consumer.

**OUR VISION**

We always aim to continue to understand the market's demands, maintain a high level of creativity and exceeding our customer's expectations with cutting-edge ideas, designs and products.

**OUR MISSION**

Our expansion plans involve a formula of adopting state of the art technologies, upgrading our design capabilities, developing staff and a high market intellinence that sets customer's needs.



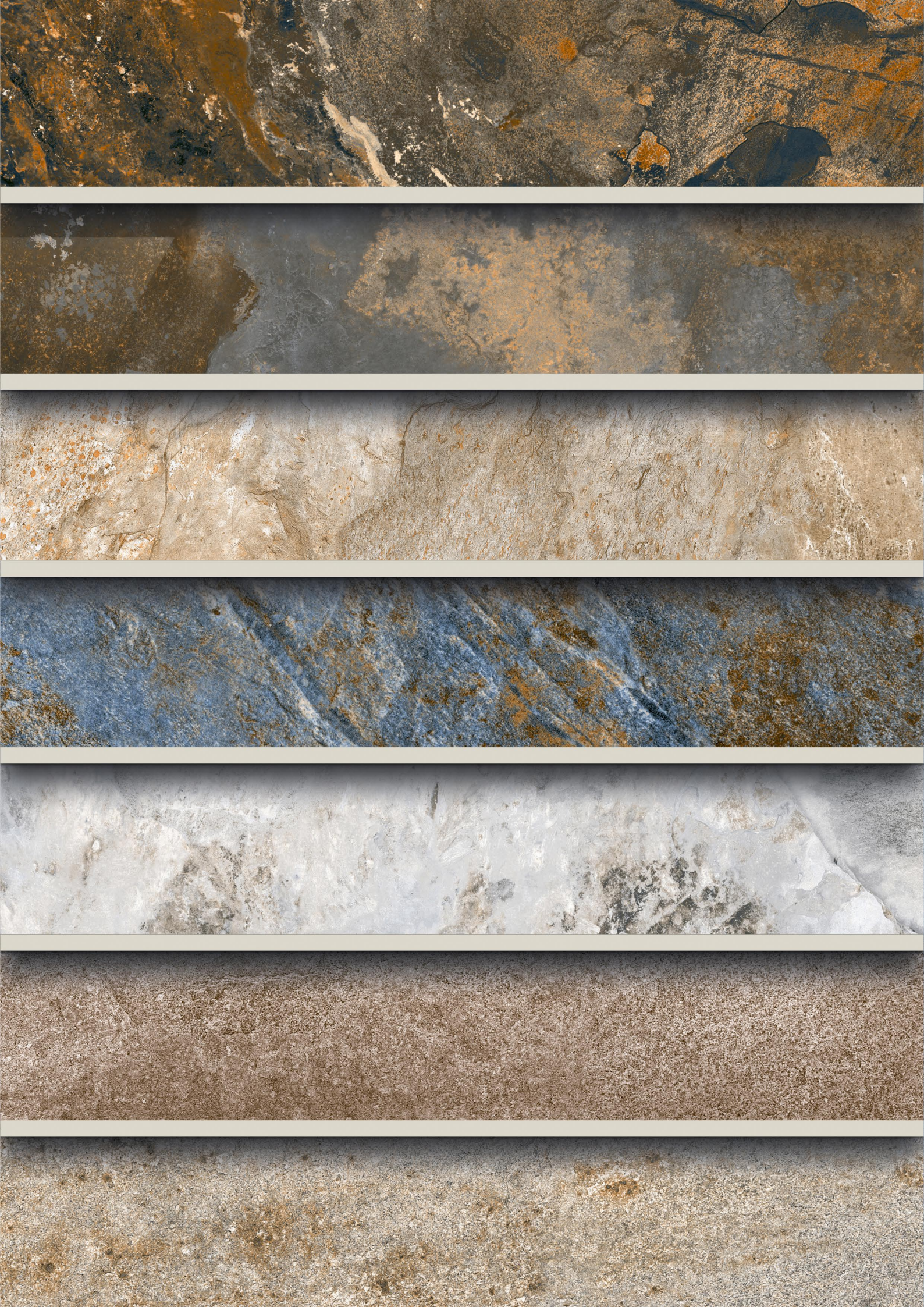


**PRECIOUS STONEART**  
COMPOSITIONS

**stone x**  
SERIES

Between the depth of marbles and the purity of travertine, the **StoneX** Collection is a world of decorative possibilities. We offer an array of beautiful Premium marble and stone collection of Digital Glazed Tiles with a wide verity of designs and unique styles. Combining the natural beauty of stone and quality materials create the superior look. StoneX collection adds elegance and vividness of colors as an incipient trend to your every space. Explore the collection NOW!





600x600mm  
DIGITAL GLAZED TILES

SURFACES AND BENEFITS



Suitable for contact with foodstuffs



Resistant to chemicals, acids, alkalis and solvents



Resistant to humidity



Resistant to mould and fungi



Resistant to staining



Resistant to UV rays, no alteration to colours



Suitable for indoor and outdoor applications



Resistant to thermal shock



Resistant to deflection



Resistant to heat and high temperatures



Resistant to freeze-thaw



Resistant to scratches and abrasions





**Extraordinary Punch  
That Create The  
Charming Effect**

**600x600mm**

**DIGITAL GLAZED TILES**

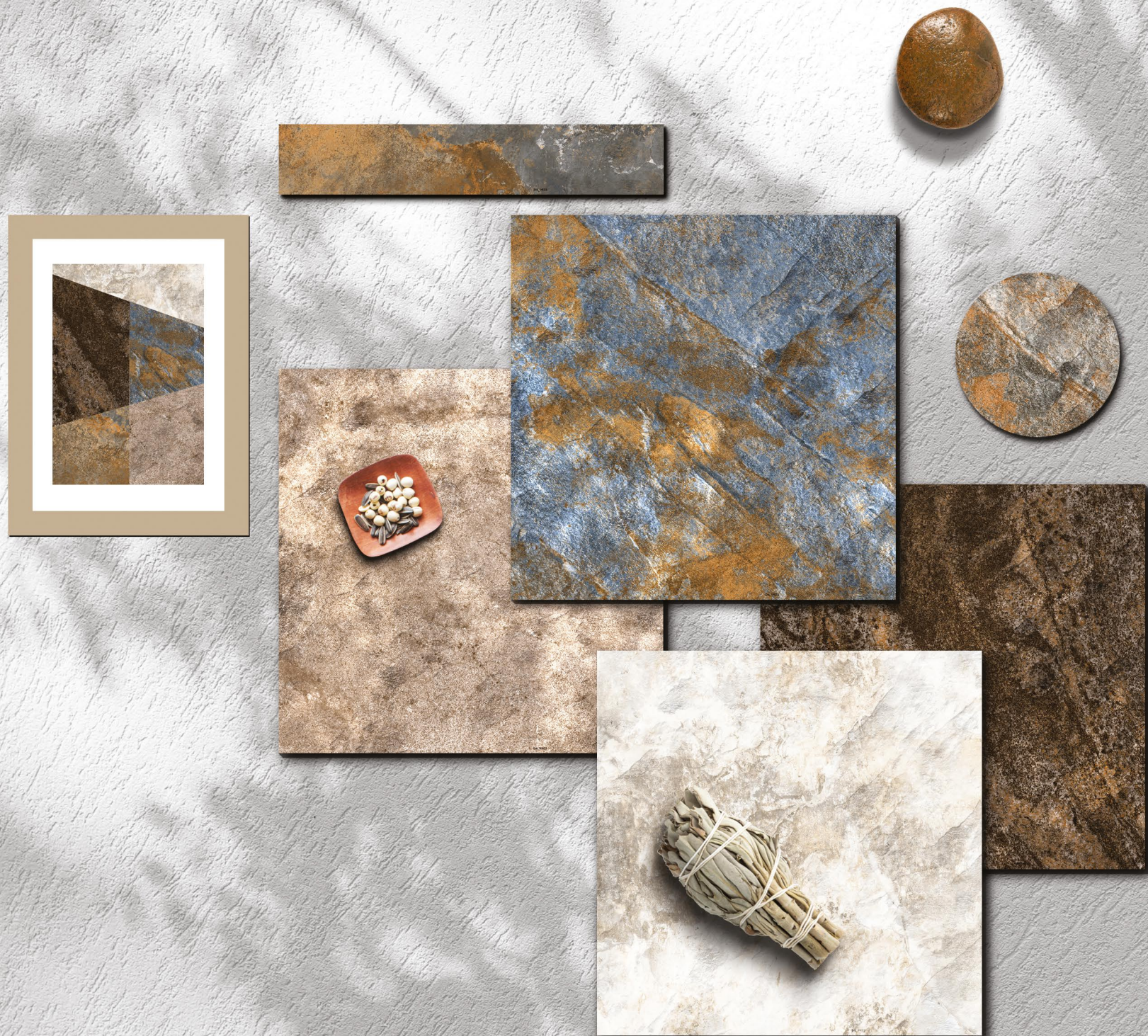
---

AVAILABLE THICKNESS  
**9MM | 12MM | 15MM**



**stone x**  
SERIES

EXCELLENT  
**ARTISTRY DESIGNS**





**stone X**  
SERIES

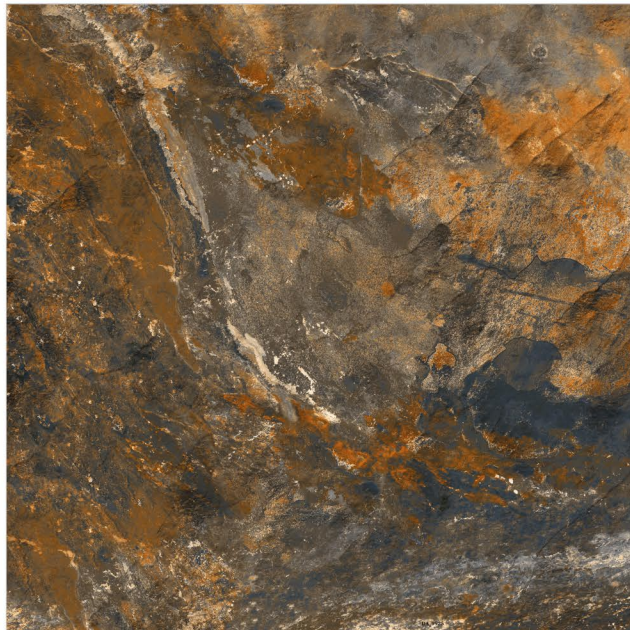
**60X60CM**  
DIGITAL  
GLAZED TILES

FINISH  
RUSTIC  
MATT

AVAILABLE THICKNESS

- 09MM
- 12MM
- 15MM

CASSIAN STONE



R  
RANDOM  
FINISH

FLOOR  
APPLICATION

HD DIGITAL  
PRINTING

R&M  
RUSTIC MATT  
FINISH

WALL  
APPLICATION

LIGHT TO  
DARK SHADE

R9  
SURFACE



**stone X**  
SERIES

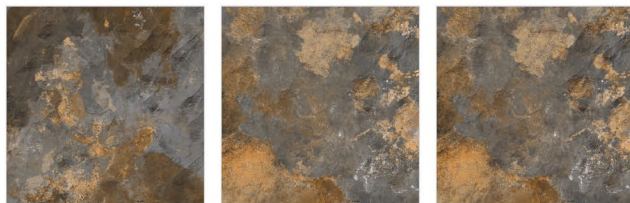
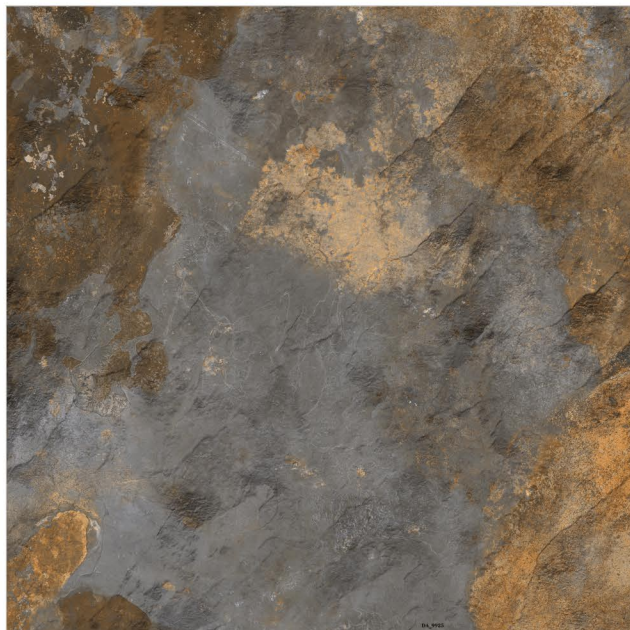
**60X60CM**  
DIGITAL  
GLAZED TILES

FINISH  
RUSTIC  
MATT

AVAILABLE THICKNESS

- 09MM
- 12MM
- 15MM

**CRONOS STONE**



R  
RANDOM  
FINISH

FLOOR  
APPLICATION

HD DIGITAL  
PRINTING

R&M  
RUSTIC MATT  
FINISH

WALL  
APPLICATION

LIGHT TO  
DARK SHADE

R9  
SURFACE

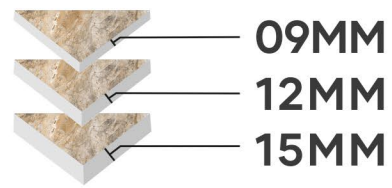


**stone x**  
SERIES

**60X60CM**  
DIGITAL  
GLAZED TILES

FINISH  
RUSTIC  
MATT

AVAILABLE THICKNESS



**EIGER STONE**





**stone x**  
SERIES

**60X60CM**  
DIGITAL  
GLAZED TILES

FINISH  
RUSTIC  
MATT

AVAILABLE THICKNESS

- 09MM
- 12MM
- 15MM

ELBRUS CORDA



R  
RANDOM  
FINISH

FLOOR  
APPLICATION

HD DIGITAL  
PRINTING

R&M  
RUSTIC MATT  
FINISH

WALL  
APPLICATION

LIGHT TO  
DARK SHADE

R9  
SURFACE

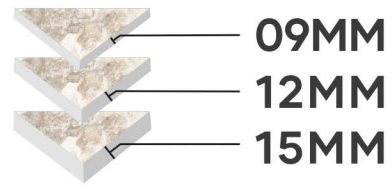


**stone x**  
SERIES

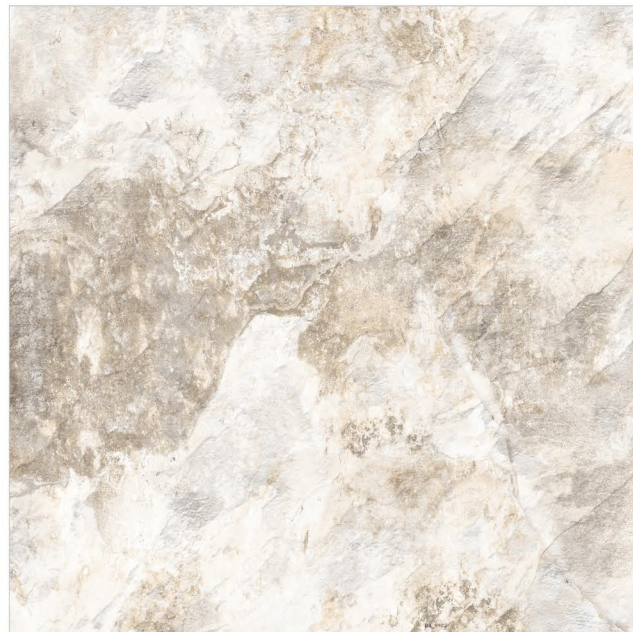
**60X60CM**  
DIGITAL  
GLAZED TILES

FINISH  
RUSTIC  
MATT

AVAILABLE THICKNESS



**ELBRUS CREMA**



R  
RANDOM  
FINISH

FLOOR  
APPLICATION

HD DIGITAL  
PRINTING

R&M  
RUSTIC MATT  
FINISH

WALL  
APPLICATION

LIGHT TO  
DARK SHADE

R9  
SURFACE



**stone x**  
SERIES

**60X60CM**  
DIGITAL  
GLAZED TILES

FINISH  
RUSTIC  
MATT

AVAILABLE THICKNESS

- 09MM
- 12MM
- 15MM

**ELBRUS GRIS**



R  
RANDOM  
FINISH

FLOOR  
APPLICATION

HD DIGITAL  
PRINTING

R&M  
RUSTIC MATT  
FINISH

WALL  
APPLICATION

LIGHT TO  
DARK SHADE

R9  
SURFACE

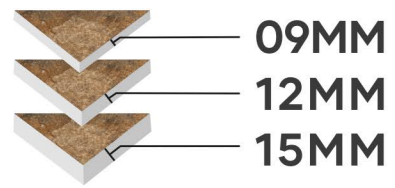


**stone X**  
SERIES

**60X60CM**  
DIGITAL  
GLAZED TILES

FINISH  
RUSTIC  
MATT

AVAILABLE THICKNESS



LEMON COTTO





**stone x**  
SERIES

**60X60CM**  
DIGITAL  
GLAZED TILES

FINISH  
RUSTIC  
MATT

AVAILABLE THICKNESS

- 09MM
- 12MM
- 15MM

LUGNEZ CORDA



R  
RANDOM  
FINISH

FLOOR  
APPLICATION

HD DIGITAL  
PRINTING

R&M  
RUSTIC MATT  
FINISH

WALL  
APPLICATION

LIGHT TO  
DARK SHADE

R9  
SURFACE



**stone x**  
SERIES

**60X60CM**  
DIGITAL  
GLAZED TILES

FINISH  
RUSTIC  
MATT

AVAILABLE THICKNESS

- 09MM
- 12MM
- 15MM

LUGNEZ IVORY



R  
RANDOM  
FINISH

FLOOR  
APPLICATION

HD DIGITAL  
PRINTING

R&M  
RUSTIC MATT  
FINISH

WALL  
APPLICATION

LIGHT TO  
DARK SHADE

R9  
SURFACE



**stone x**  
SERIES

**60X60CM**  
DIGITAL  
GLAZED TILES

FINISH  
RUSTIC  
MATT

AVAILABLE THICKNESS

- 09MM
- 12MM
- 15MM

**SALUMBER STONE**



R  
RANDOM  
FINISH

FLOOR  
APPLICATION

HD DIGITAL  
PRINTING

R&M  
RUSTIC MATT  
FINISH

WALL  
APPLICATION

LIGHT TO  
DARK SHADE

R9  
SURFACE





**stone x**  
SERIES

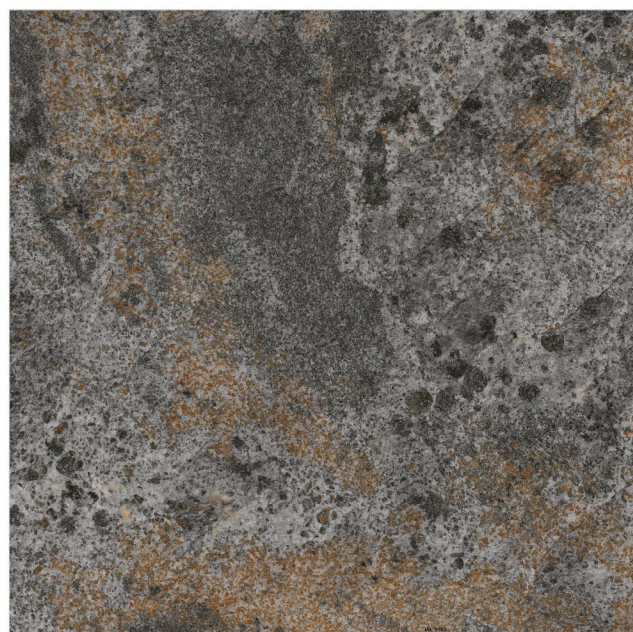
**60X60CM**  
DIGITAL  
GLAZED TILES

FINISH  
RUSTIC  
MATT

AVAILABLE THICKNESS

- 09MM
- 12MM
- 15MM

VINSON GRIS



R  
RANDOM  
FINISH

FLOOR  
APPLICATION

HD DIGITAL  
PRINTING

R&M  
RUSTIC MATT  
FINISH

WALL  
APPLICATION

LIGHT TO  
DARK SHADE

R9  
SURFACE

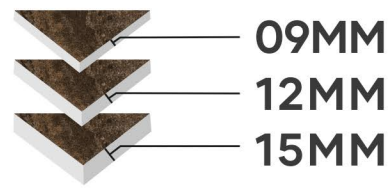


**stone x**  
SERIES

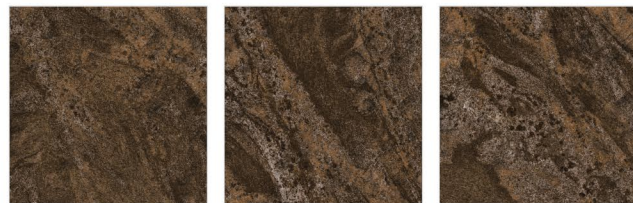
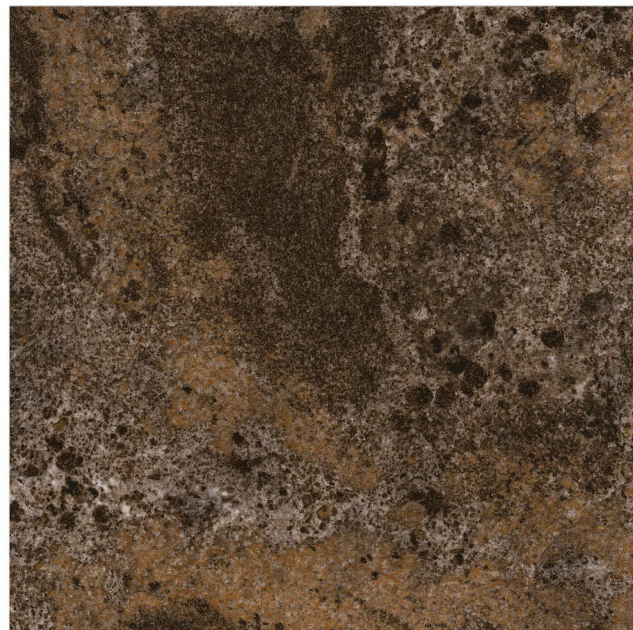
**60X60CM**  
DIGITAL  
GLAZED TILES

FINISH  
RUSTIC  
MATT

AVAILABLE THICKNESS



VINSON WENGE



- R  
RANDOM FINISH
- FLOOR APPLICATION
- HD DIGITAL PRINTING
- R&M  
RUSTIC MATT FINISH
- WALL APPLICATION
- LIGHT TO DARK SHADE
- R9  
SURFACE



**stone X**  
SERIES

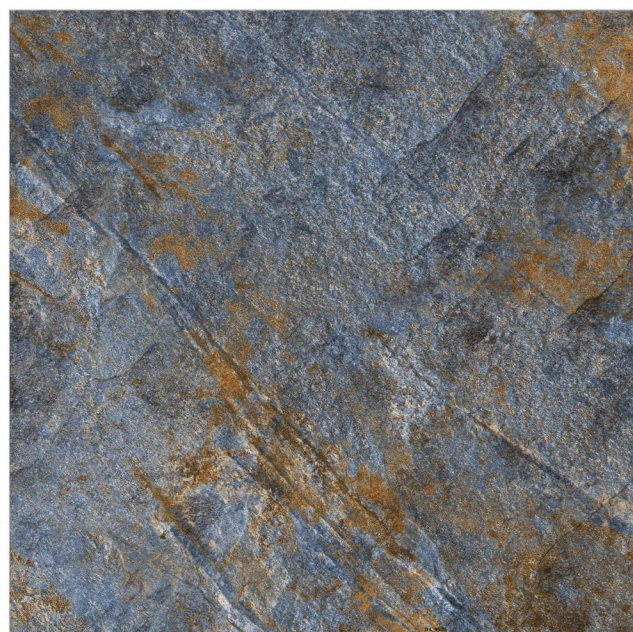
**60X60CM**  
DIGITAL  
GLAZED TILES

FINISH  
RUSTIC  
MATT

AVAILABLE THICKNESS

- 09MM
- 12MM
- 15MM

ZYNITE BLUE



R  
RANDOM  
FINISH

FLOOR  
APPLICATION

HD DIGITAL  
PRINTING

R&M  
RUSTIC MATT  
FINISH

WALL  
APPLICATION

LIGHT TO  
DARK SHADE

R9  
SURFACE



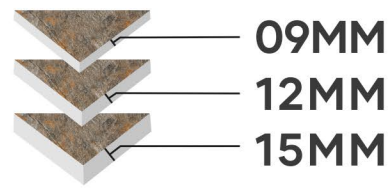


**stone x**  
SERIES

**60X60CM**  
DIGITAL  
GLAZED TILES

FINISH  
RUSTIC  
MATT

AVAILABLE THICKNESS



ZYNITE BROWN



R  
RANDOM  
FINISH

FLOOR  
APPLICATION

HD DIGITAL  
PRINTING

R&M  
RUSTIC MATT  
FINISH

WALL  
APPLICATION

LIGHT TO  
DARK SHADE

R9  
SURFACE



**stone X**  
SERIES

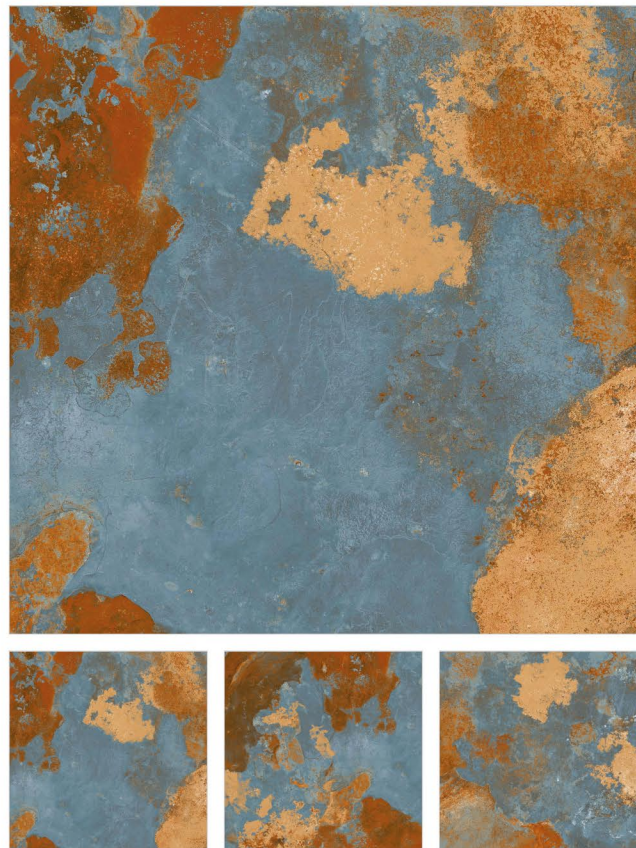
**60X60CM**  
DIGITAL  
GLAZED TILES

FINISH  
**RUSTIC  
MATT**

AVAILABLE THICKNESS

- 09MM
- 12MM
- 15MM

**CRONOS STONE AQUA**



- RANDOM FINISH
- FLOOR APPLICATION
- HD DIGITAL PRINTING
- R&M RUSTIC MATT FINISH
- WALL APPLICATION
- LIGHT TO DARK SHADE
- R9 SURFACE



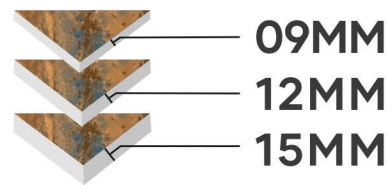


**stone x**  
SERIES

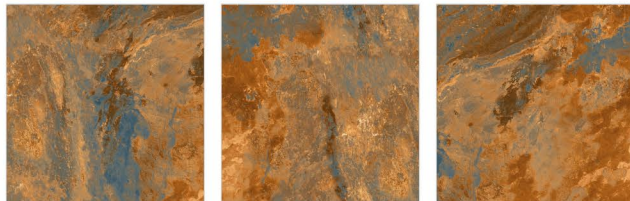
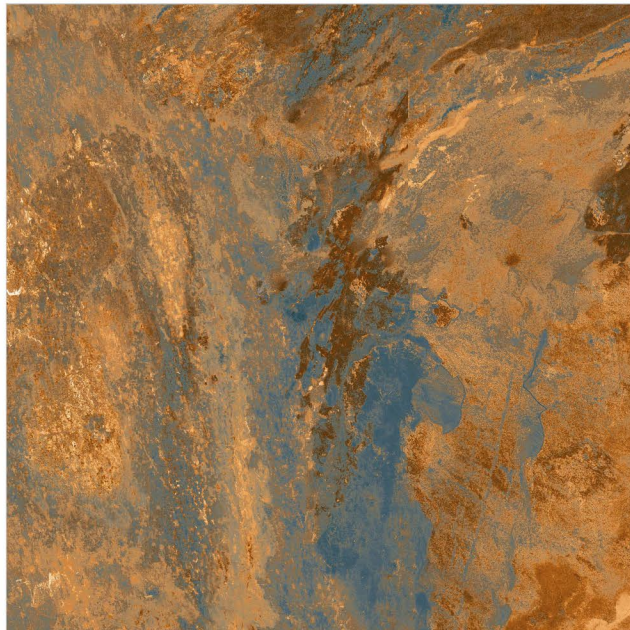
**60X60CM**  
DIGITAL  
GLAZED TILES

FINISH  
RUSTIC  
MATT

AVAILABLE THICKNESS



WAKANDA BROWN



- R  
RANDOM FINISH
- FLOOR APPLICATION
- HD DIGITAL PRINTING
- R&M  
RUSTIC MATT FINISH
- WALL APPLICATION
- LIGHT TO DARK SHADE
- R9 SURFACE



**stone X**  
SERIES

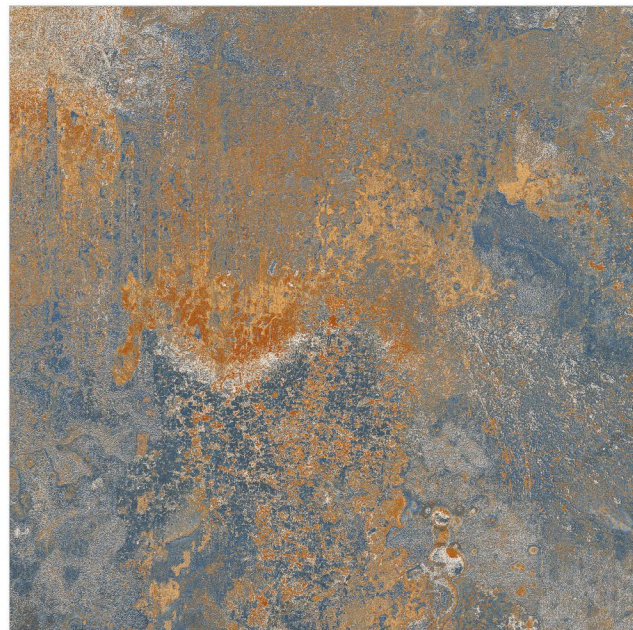
**60X60CM**  
DIGITAL  
GLAZED TILES

FINISH  
RUSTIC  
MATT

AVAILABLE THICKNESS

- 09MM
- 12MM
- 15MM

WALCAN STONE



R  
RANDOM  
FINISH

FLOOR  
APPLICATION

HD DIGITAL  
PRINTING

R&M  
RUSTIC MATT  
FINISH

WALL  
APPLICATION

LIGHT TO  
DARK SHADE

R9  
SURFACE



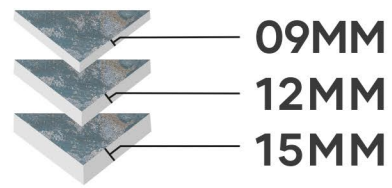
**stone x**  
SERIES

**60X60CM**

DIGITAL  
GLAZED TILES

FINISH  
RUSTIC  
MATT

AVAILABLE THICKNESS



WENDIKAR AQUA



- RANDOM FINISH
- FLOOR APPLICATION
- HD DIGITAL PRINTING
- R&M RUSTIC MATT FINISH
- WALL APPLICATION
- LIGHT TO DARK SHADE
- R9 SURFACE



**stone x**  
SERIES

**60X60CM**  
DIGITAL  
GLAZED TILES

FINISH  
RUSTIC  
MATT

AVAILABLE THICKNESS

- 09MM
- 12MM
- 15MM

ZENDROS AQUA



R  
RANDOM  
FINISH

FLOOR  
APPLICATION

HD DIGITAL  
PRINTING

R&M  
RUSTIC MATT  
FINISH

WALL  
APPLICATION

LIGHT TO  
DARK SHADE

R9  
SURFACE





**stone x**  
SERIES

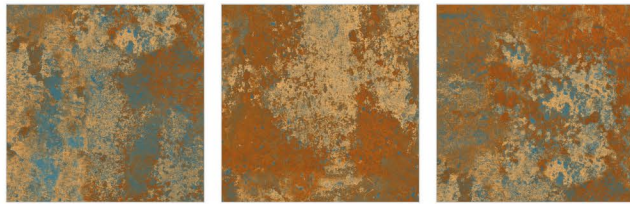
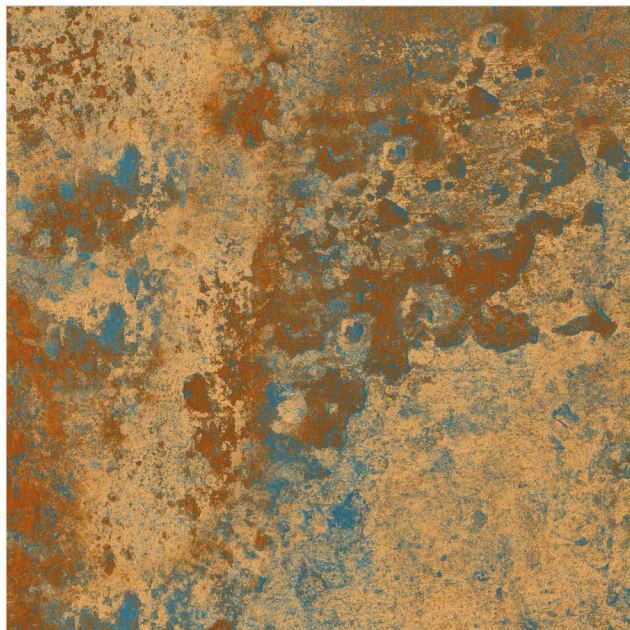
**60X60CM**  
DIGITAL  
GLAZED TILES

FINISH  
RUSTIC  
MATT

AVAILABLE THICKNESS

- 09MM
- 12MM
- 15MM

ZENDROS BROWN



R  
RANDOM  
FINISH

FLOOR  
APPLICATION

HD DIGITAL  
PRINTING

R&M  
RUSTIC MATT  
FINISH

WALL  
APPLICATION

LIGHT TO  
DARK SHADE

R9  
SURFACE





## SPECIFICATIONS

Work Size		Avg. Weight Per Box. (Kgs.)	No. of Tiles Per Box	Coverage Areas Per Box
Dimensions (In mm)	Thickness (in mm)			
600x600 (Digital)	9.00	28.50	4 Pcs.	1.44 Sq. meter (15.5 Sq. Feet)
600x600 (Digital)	12.00	26.00	3 Pcs.	1.08 Sq. meter (11.62 Sq. Feet)
600x600 (Digital)	15.00	22.00	2 Pcs.	0.72 Sq. meter (7.75 Sq. Feet)

### Conformity of **Graystone Ceramic** to Indian Standards (Group B II a) IS:15622:2017

Sr. No.	CHARACTERISTICS	IS: 15622:2017	Our Specification	Method of Testing
1	Deviation in Length & Width	Max. $\pm 0.1$ %	Max. $\pm 0.1$ %	IS : 13630-1
2	Deviation in Thickness	Max. $\pm 5.0$ %	Max. $\pm 3.0$ %	IS : 13630-1
3	Deviation in Straightness of sides	Max. $\pm 0.1$ %	Max. $\pm 0.03$ %	IS : 13630-1
4	Deviation in Rectangularity	Max. $\pm 0.1$ %	Max. $\pm 0.04$ %	IS : 13630-1
5	Surface Flatness	Max. $\pm 0.5$ %	Max. $\pm 0.04$ %	IS : 13630-1
6	Surface Quality	Min. 95% free from visible defects.	Min. 99% free from visible defects.	IS : 13630-1
7	Water Absorption	Avg. $3 < E \leq 6$ % Individual max. 6.2 %	Avg. $2 < E \leq 6$ % Individual max. 6.0 %	IS : 13630-2
8	Scratch Hardness (Moh's Scale)	Min. 4	Min. 5	IS : 13630-13
9	Abrasion Resistance	Class II Min.	Class III Min.	IS : 13630- 11
10	Crazing Resistance	4 Cycle at 7.5 bar min	4 Cycle at 7.5 bar Min.	IS : 13630- 11
11	Modulus of Rupture N/mm <sup>2</sup>	Avg. 22, Individual 20, Min	Avg. 36 , Individual 35 Min.	IS : 13630 - 6
12	Breaking Strength, in N	600. Min. for thickness < 7.5mm 1000, Min. for thickness $\geq 7.5$ mm	1670 Min.	IS : 13630- 6
13	Chemical Resistance	Required if agreed	Resistance to all acids and alkalis (except hydrochloric acid, Citric acid & Resistance to Alkali Potassium Hydroxide)	IS : 13630- 8
14	Thermal Shock Resistance	10 Cycles, Min.	10 Cycles Min.	IS : 13630- 5
15	Resistance to Household Chemicals	Class AA, Min.	Class AA Min.	IS : 13630- 8
16	Resistance to staining	Class 1, Min.	Class 1 Min.	IS : 13630- 8

#### Note

\*All technical features stated in leaflets, In master brochure are meant to be an indication of an average of figures recorded within a span (determined by international) in several production runs, therefore a slight discrepancy in quality figures of a certain batch in relation to these figures cannot be considered a production failure.

#### APPLICATION







**GRAYSTONE CERAMIC LLP.**

Survey No. 86, Plot No. 14, Sartanpar Road,  
8-A, National Highway, Ta. Wankaner, Dist. Morbi,  
Pin. 363 621 Gujarat, INDIA.

Mo.: +91 7229 07 07 07

E-mail: [info@graystoneceramic.com](mailto:info@graystoneceramic.com)



[www.graystoneceramic.com](http://www.graystoneceramic.com)