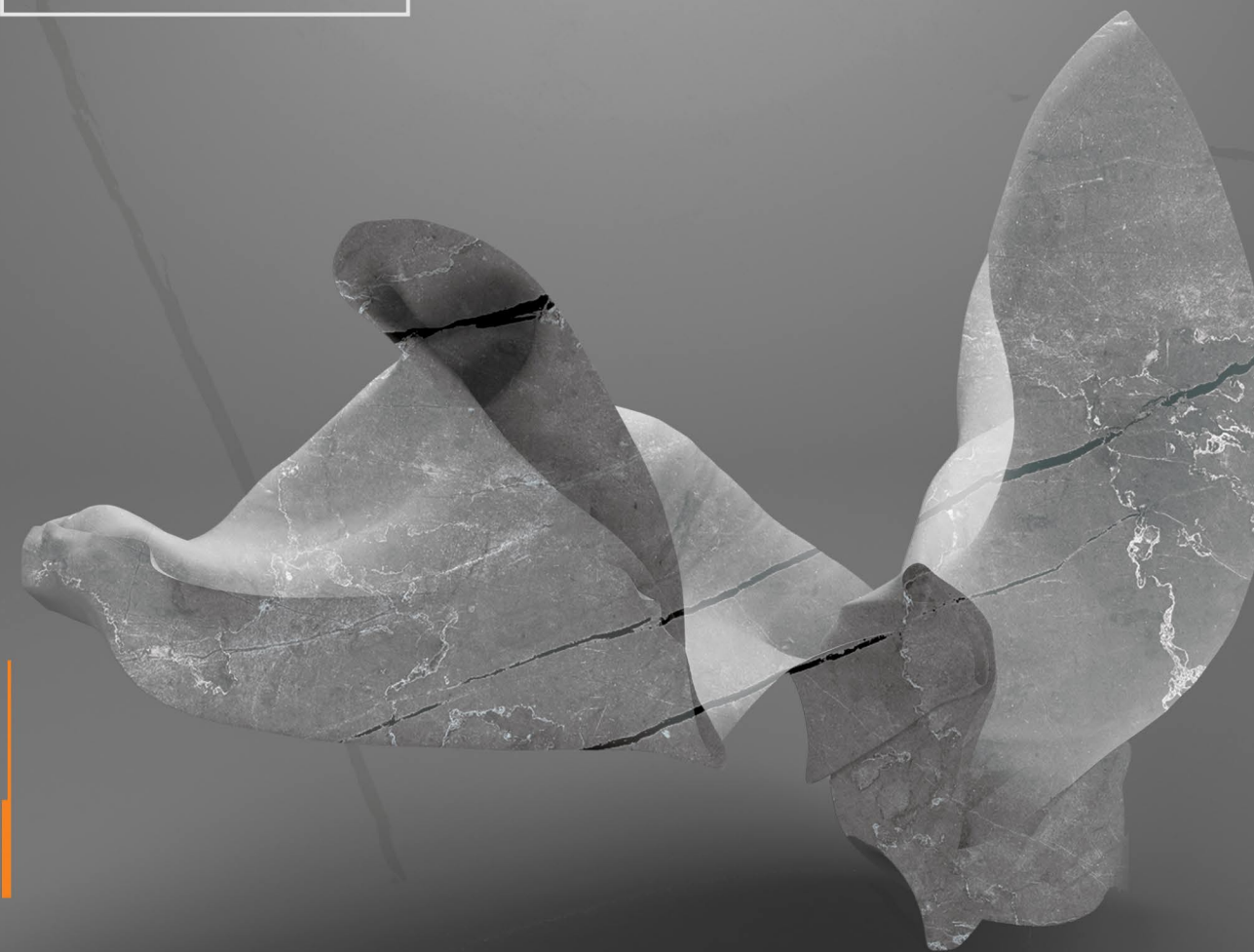




FUSION
SERIES

600x600mm

DIGITAL
GLAZED TILES



Legacy
of Luxury

Graystone Ceramic Llp.

Survey No. 86, Plot No. 14, Sartanpar Road,
8-A, National Highway, Ta. Wankaner, Dist. Morbi,
Pin. 363 621, Gujarat, India.

Call.
+91 7229 07 07 07

Mail.
info@graystoneceramic.com

Web.
www.graystoneceramic.com

afumato grafica +91 8000 29591

Furnish your dreams
GRAYSTONE
CERAMIC





Our Vision

We always aim to continue to understand the market's demands, maintain a high level of creativity and exceeding our customer's expectations with cutting-edge ideas, designs and products.

Our Mission

Our expansion plans involve a formula of adopting state of the art technologies, upgrading our design capabilities, developing staff and a high market intellinence that sets customer's needs.

Welcome to Graystone Ceramic

We are very pleased to interact with you and will introduce ourselves as a manufacturer of digital glazed tiles by our brand "GRAYSTONE CERAMIC LLP", and proudly providing the finest quality of digital glazed tiles to our valued customers.

We are manufacturing and supply high quality finest range of digital glazed tiles in size 600x600mm & 600x1200mm.

Graystone Ceramic have set up a world class production facility to manufacture high quality digital glazed tiles. The designs, size, colors and surface finishes will be made keeping in mind the needs of consumer.



FUSION
SERIES

600x600mm

DIGITAL
GLAZED TILES

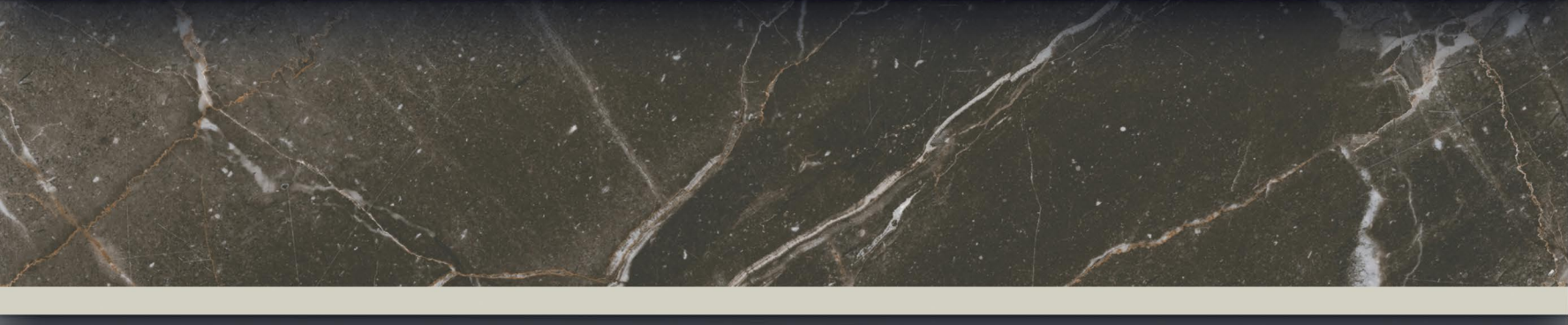
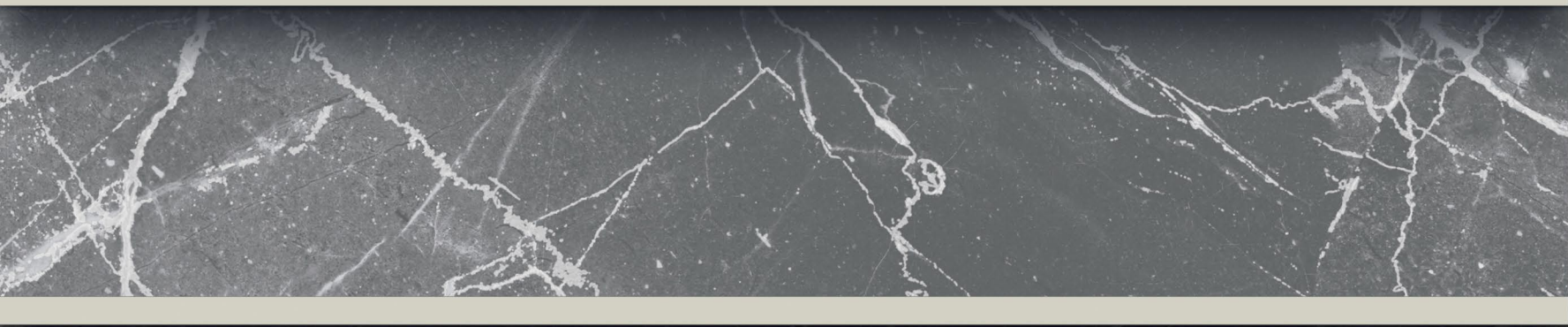
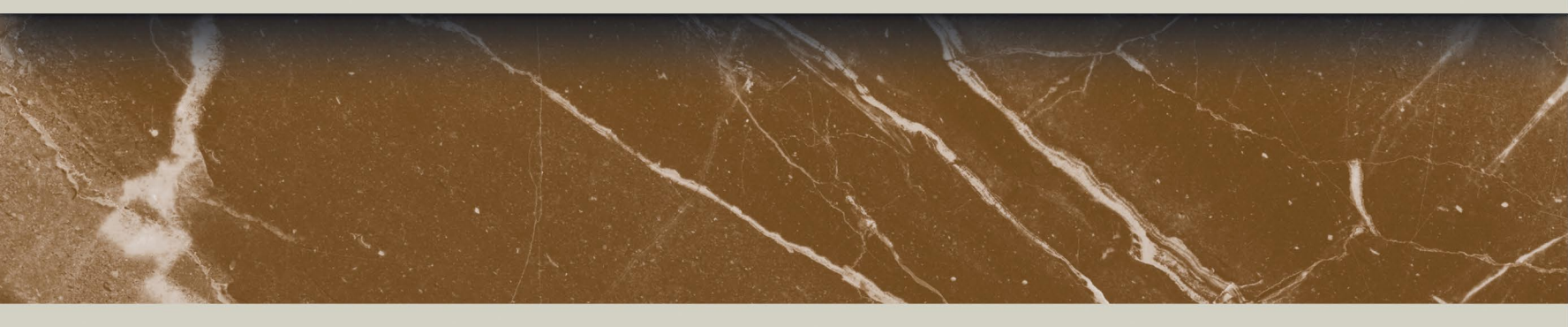
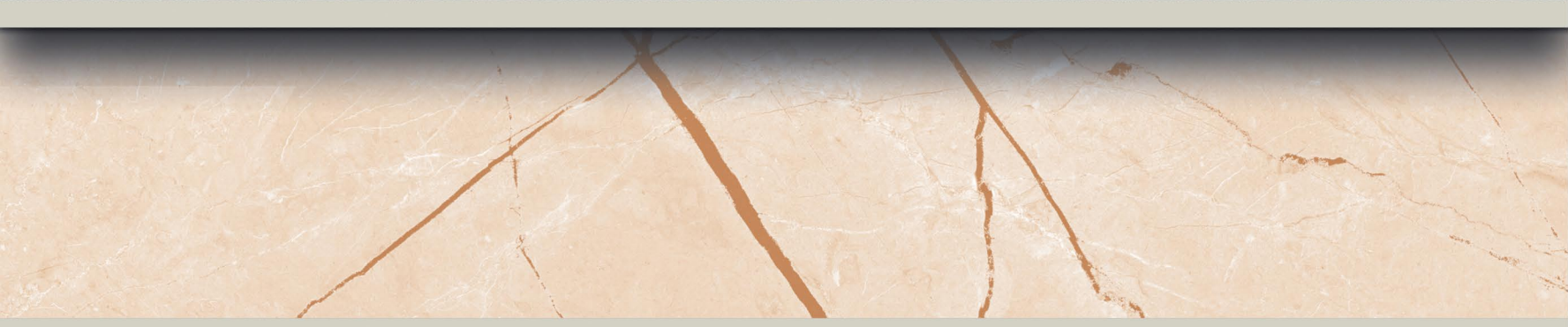
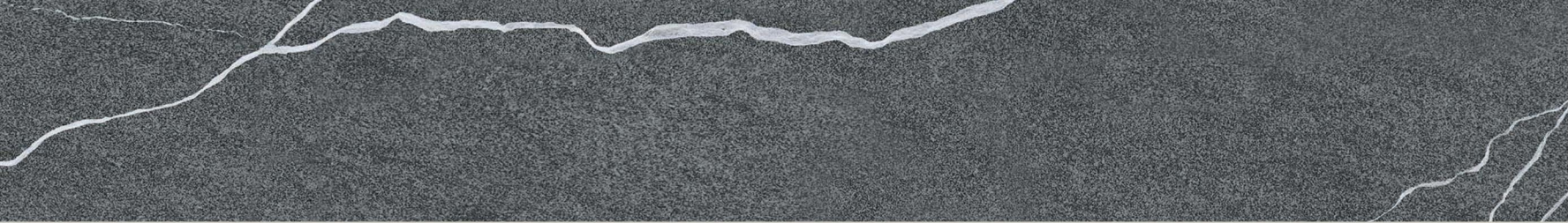
Furnish your dreams
GRAYSTONE
CERAMIC

Fabulous design icon

FUSION
SERIES

Let your space sparkle & shine with marvellous tiles by Graystone Ceramic. We are presenting "Fusion Series"- the collection of Premium range Digital Glazed Tiles that gives luxury feel to your every ambiance. When looking for suitable and something new innovative option of tiles for your space, we are offering interesting carving finish Digital Glazed Tiles that give an elegant look and adds the value, beauty and overall aesthetic appeal to your space with superior finish, range of colours and iconic designs that everyone's capturing the attention.

www.graystoneceramic.com



600x600mm DIGITAL GLAZED TILES

SURFACES AND BENEFITS



Suitable for contact with foodstuffs



Resistant to chemicals, acids, alkalis and solvents



Resistant to humidity



Resistant to mould and fungi



Resistant to staining



Resistant to UV rays, no alteration to colours



Suitable for indoor and outdoor applications



Resistant to thermal shock



Resistant to deflection



Resistant to heat and high temperatures



Resistant to freeze-thaw



Resistant to scratches and abrasions



Supreme
**texture
of artistry**

600x600mm

DIGITAL
GLAZED TILES

FUSION
SERIES



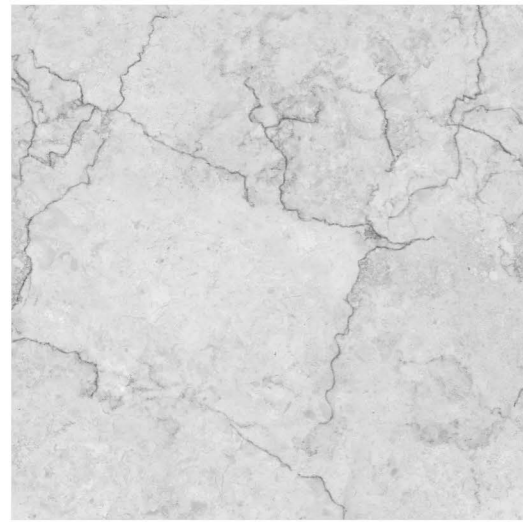
AFYON CREMA
CARVING FINISH 3 PHASE



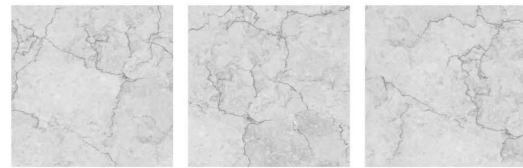
ALTIN CLARO
CARVING FINISH 3 PHASE



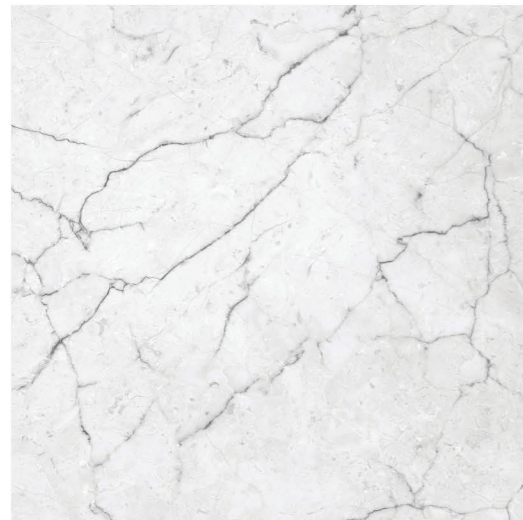
PREVIEW OF AFYON CREMA



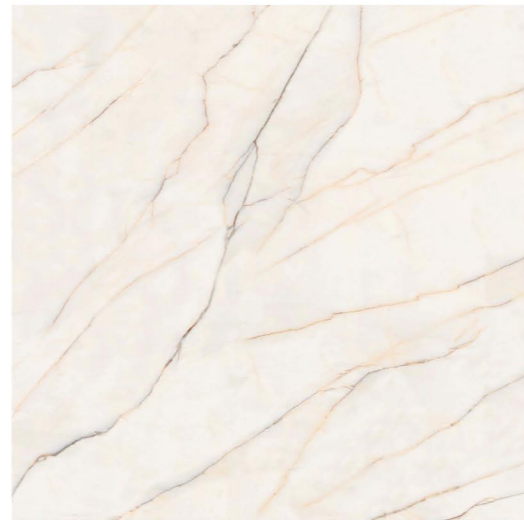
AFYON RHINO
CARVING FINISH 3 PHASE



ATHENS FROZEN
CARVING FINISH 3 PHASE



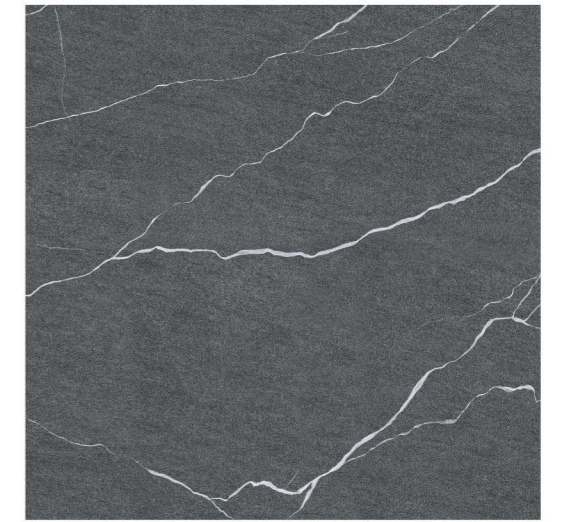
ARMENTA FROZEN
CARVING FINISH 3 PHASE



AVORIO CORDA
CARVING FINISH



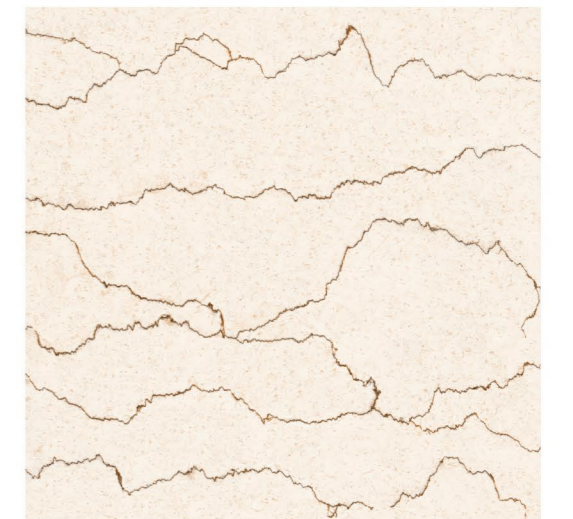
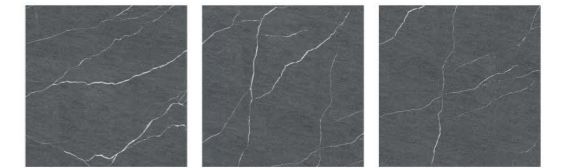
PREVIEW OF AFYON RHINO



ALTIN GRIS

CARVING FINISH

3 PHASE



BOTOCHINO CREMA

CARVING FINISH

3 PHASE



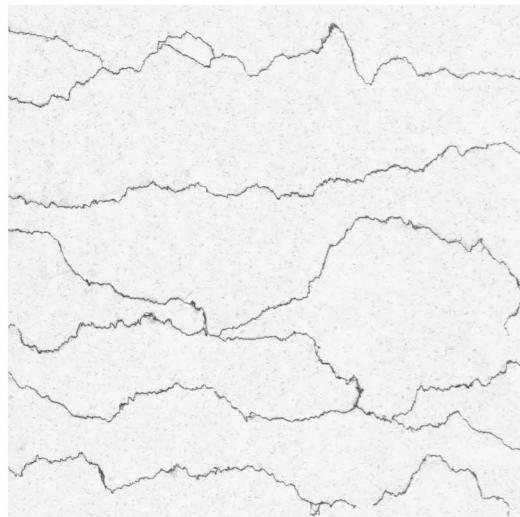
PREVIEW OF ALTIN GRIS



ARMENTA BIANCO

CARVING FINISH

3 PHASE



BOTOCHINO SNOW

CARVING FINISH

3 PHASE



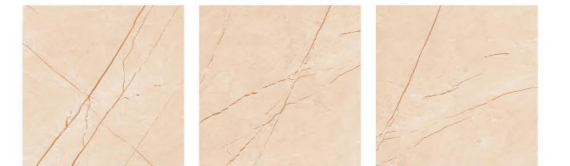
PREVIEW OF ARMENTA BIANCO



CASERTA CREMA

CARVING FINISH

3 PHASE



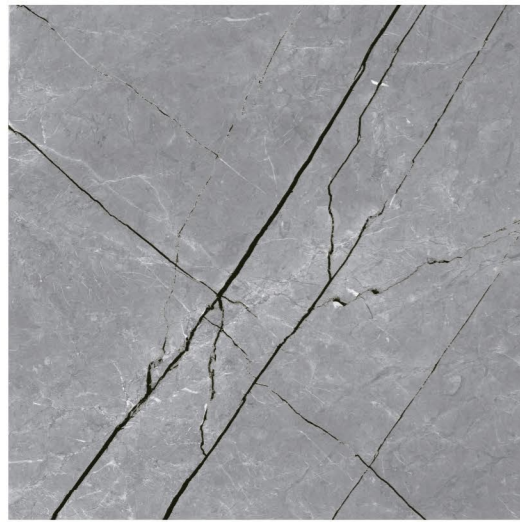
CROATIA FROZEN

CARVING FINISH

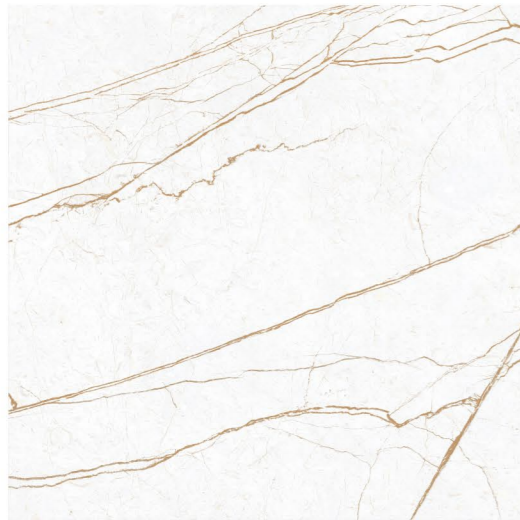
3 PHASE



PREVIEW OF CASERTA CREMA



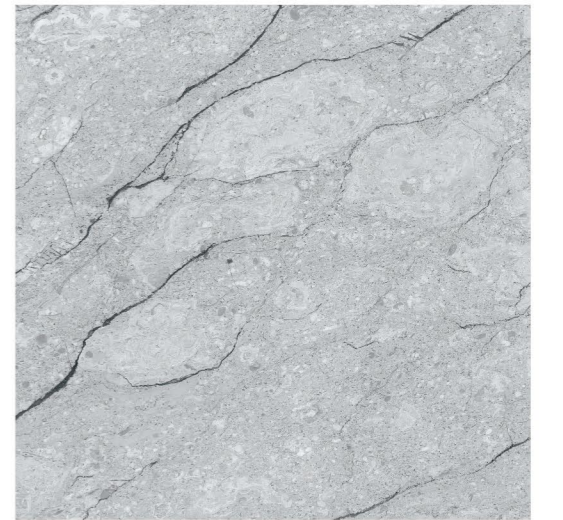
CASERTA GRAY
CARVING FINISH 3 PHASE



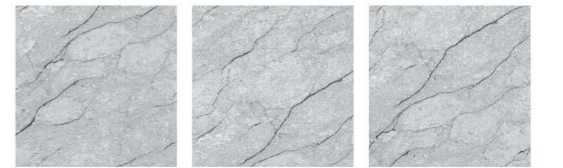
HIRAETH BROWN
CARVING FINISH 3 PHASE



PREVIEW OF CASERTA GRAY



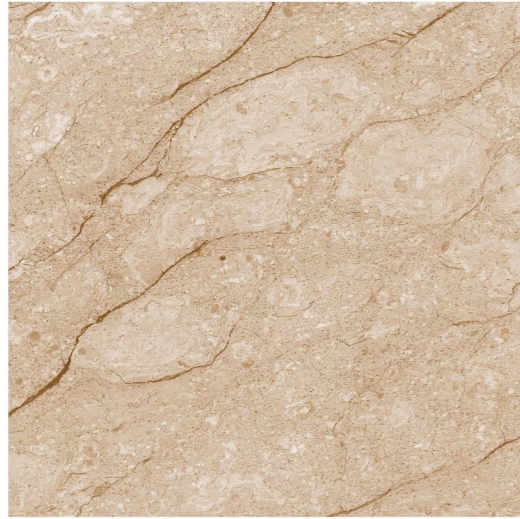
CENSAS GRIS
CARVING FINISH 3 PHASE



HIRAETH GRAY
CARVING FINISH 3 PHASE



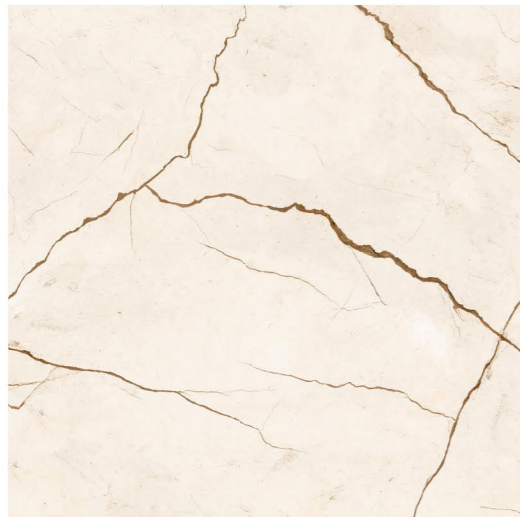
PREVIEW OF CENSAS GRIS



CENSAS MARRON

CARVING FINISH

3 PHASE



LATINA CORDA

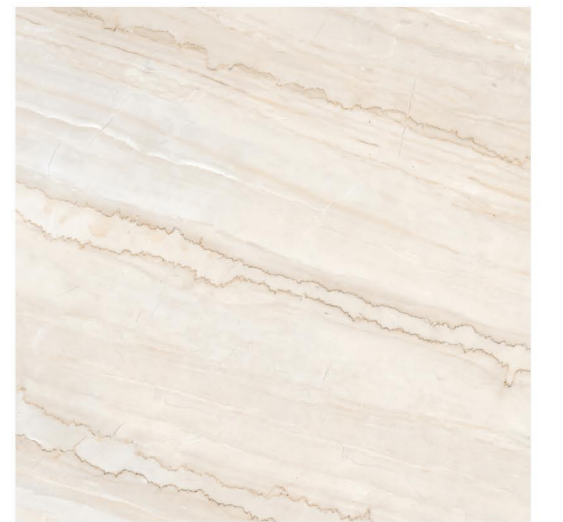
CARVING FINISH



PREVIEW OF CENSAS MARRON



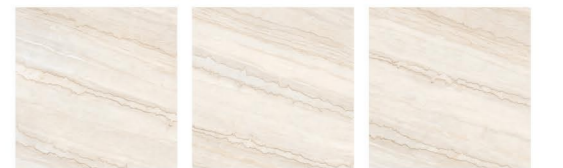
PREVIEW OF CROATIA BIANCO



CROATIA BIANCO

CARVING FINISH

3 PHASE



LATINA GRIS

CARVING FINISH



PREVIEW OF NOX DARK GRAY



MARFIL CORDA
CARVING FINISH



NOX DARK GRAY
CARVING FINISH 3 PHASE

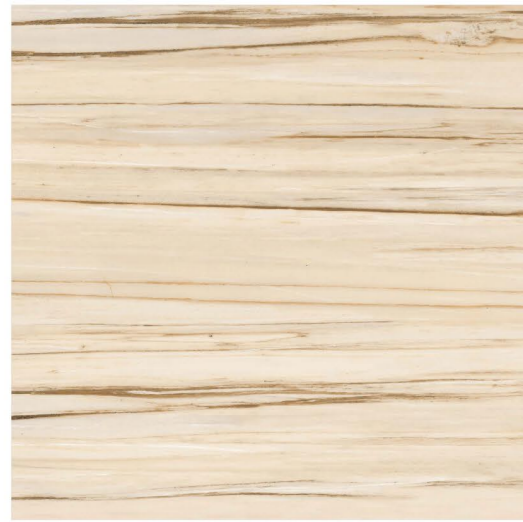


NOX CREMA
CARVING FINISH 3 PHASE

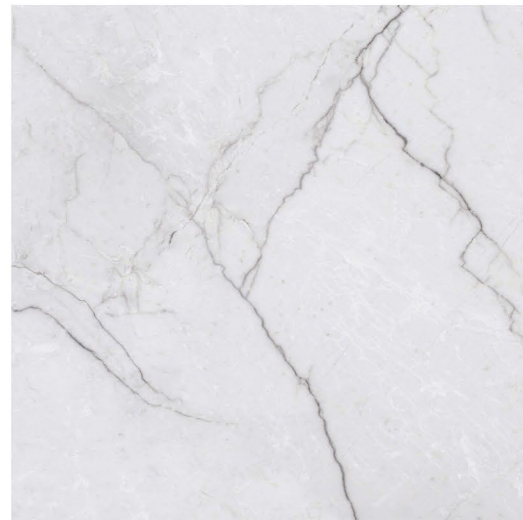


NOX SILVER
CARVING FINISH 3 PHASE





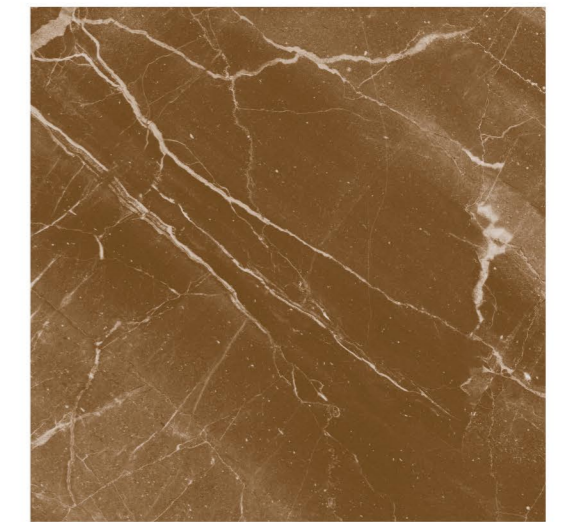
SALVADOR CREMA
CARVING FINISH 3 PHASE



SEGESTA FROZEN
CARVING FINISH



PREVIEW OF SALVADOR CREMA



SALWIN MARRON

CARVING FINISH

3 PHASE



SEGOVIA CREMA

CARVING FINISH

3 PHASE



PREVIEW OF SALWIN MARRON



SALWIN FRENCH
CARVING FINISH 3 PHASE



TUSCANY CREMA
CARVING FINISH 3 PHASE

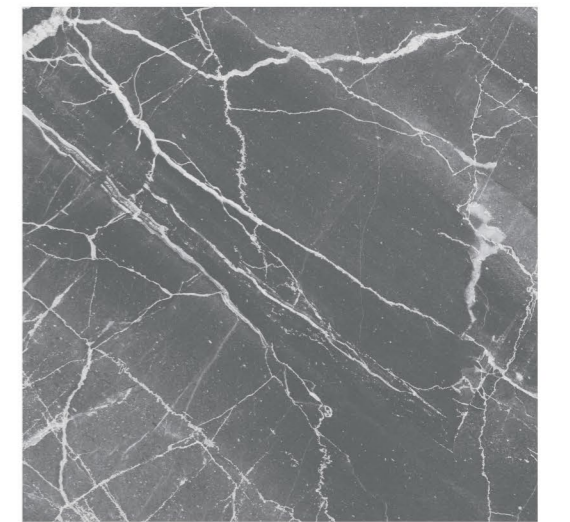


PREVIEW OF SALWIN FRENCH

600x600mm | DIGITAL GLAZED TILES



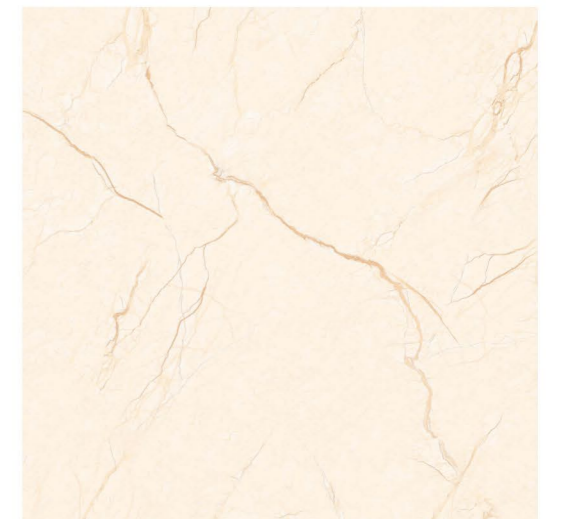
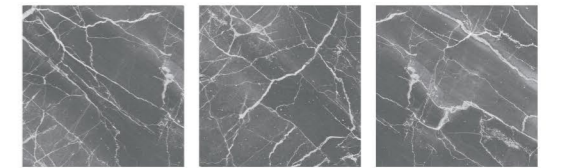
www.graystoneceramic.com



SALWIN GRIS

CARVING FINISH

3 PHASE



VERONA BEIGE

CARVING FINISH

3 PHASE



PREVIEW OF SALWIN GRIS





TUSCANY BROWN

CARVING FINISH

3 PHASE



VERONA GRAY

CARVING FINISH

3 PHASE



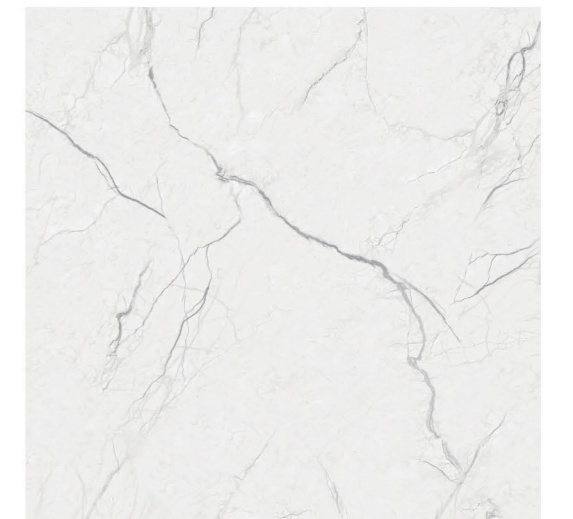
PREVIEW OF TUSCANY BROWN



VERONA BROWN

CARVING FINISH

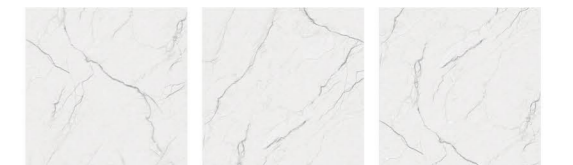
3 PHASE



VERONA SILVER

CARVING FINISH

3 PHASE



PREVIEW OF VERONA BROWN



VOLGA ASH
CARVING FINISH 3 PHASE



VOLGA SNOW
CARVING FINISH 3 PHASE



PREVIEW OF VOLGA ASH

SPECIFICATIONS

Work Size		Avg. Weight Per Box. (Kgs.)	No. of Tiles Per Box	Coverage Areas Per Box
Dimensions (In mm)	Thickness (in mm)			
600x600 (Digital)	9.25	28.50	4 Pcs.	1.44 Sq. meter (15.5 Sq. Foot)

Conformity of **Graystone Ceramic** to Indian Standards (Group B II a) IS:15622:2017

Sr. No.	CHARACTERISTICS	IS: 15622:2017	Our Specification	Method of Testing
1	Deviation in Length & Width	Max. \pm 0.1 %	Max. \pm 0.1 %	IS : 13630-1
2	Deviation in Thickness	Max. \pm 5.0 %	Max. \pm 3.0 %	IS : 13630-1
3	Deviation in Straightness of sides	Max. \pm 0.1 %	Max. \pm 0.03 %	IS : 13630-1
4	Deviation in Rectangularity	Max. \pm 0.1 %	Max. \pm 0.04 %	IS : 13630-1
5	Surface Flatness	Max. \pm 0.5 %	Max. \pm 0.04 %	IS : 13630-1
6	Surface Quality	Min. 95% free from visible defects.	Min. 99% free from visible defects.	IS : 13630-1
7	Water Absorption	Avg. $3 < E \leq 6\%$ Individual max. 6.2 %	Avg. $2 < E \leq 6\%$ Individual max. 6.0 %	IS : 13630-2
8	Scratch Hardness (Moh's Scale)	Min. 4	Min. 5	IS : 13630-13
9	Abrasion Resistance	Class II Min.	Class III Min.	IS : 13630- 11
10	Crazing Resistance	4 Cycle at 7.5 bar min	4 Cycle at 7.5 bar Min.	IS : 13630- 11
11	Modulus of Rupture N/mm ²	Avg. 22, Individual 20, Min	Avg. 36 , Individual 35 Min.	IS : 13630 - 6
12	Breaking Strength, in N	600. Min. for thickness < 7.5mm 1000, Min. for thickness \geq 7.5 mm	1670 Min.	IS : 13630- 6
13	Chemical Resistance	Required if agreed	Resistance to all acids and alkalis (except hydrochloric acid, Citric acid & Resistance to Alkali Potassium Hydroxide)	IS : 13630- 8
14	Thermal Shock Resistance	10 Cycles, Min.	10 Cycles Min.	IS : 13630- 5
15	Resistance to Household Chemicals	Class AA, Min.	Class AA Min.	IS : 13630- 8
16	Resistance to staining	Class 1, Min.	Class 1 Min.	IS : 13630- 8

Note

*All technical features stated in leaflets, In master brochure are meant to be an indication of an average of figures recorded within a span (determined by international) in several production runs, therefore a slight discrepancy in quality figures of a certain batch in relation to these figures cannot be considered a production failure.

APPLICATION

